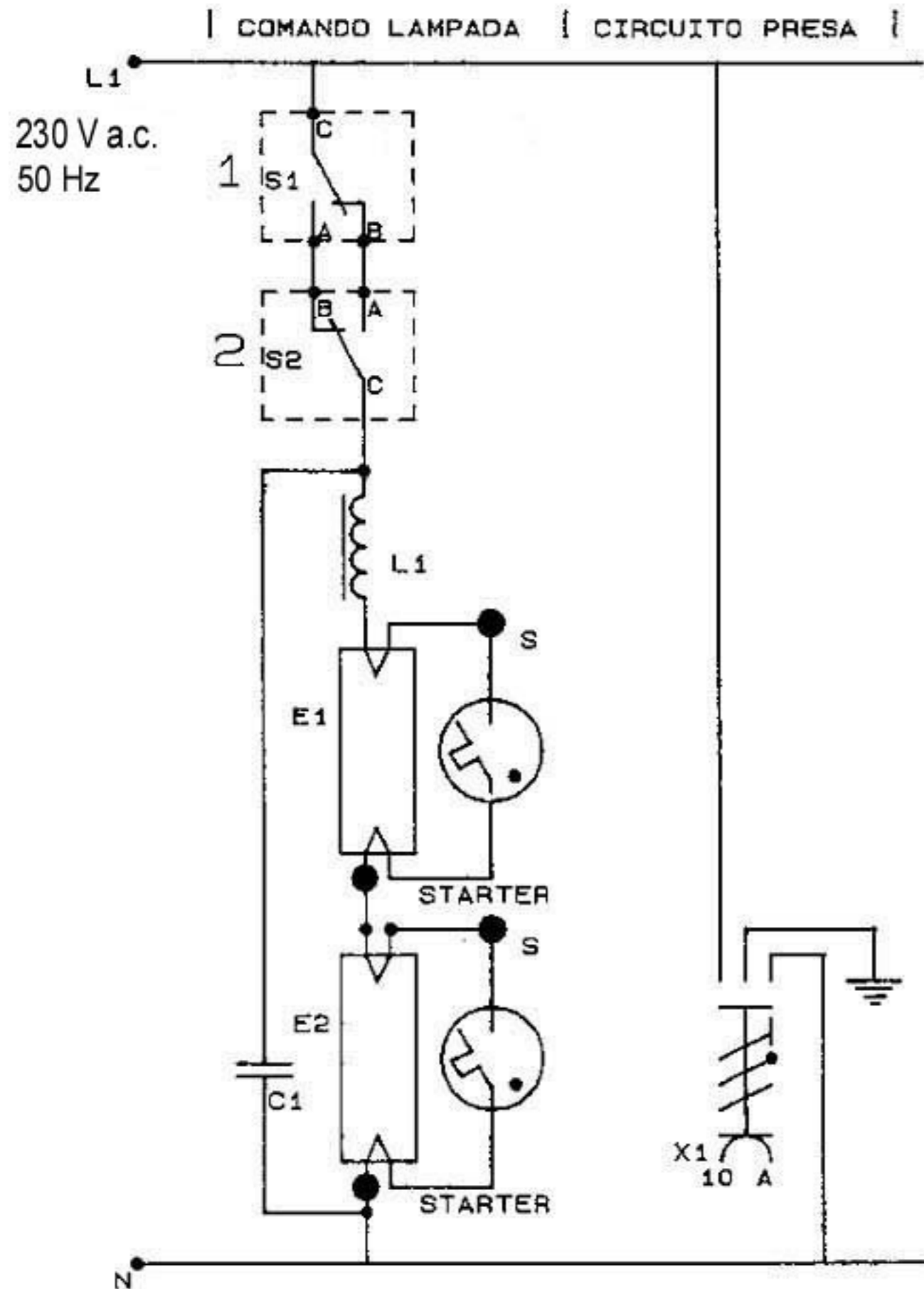
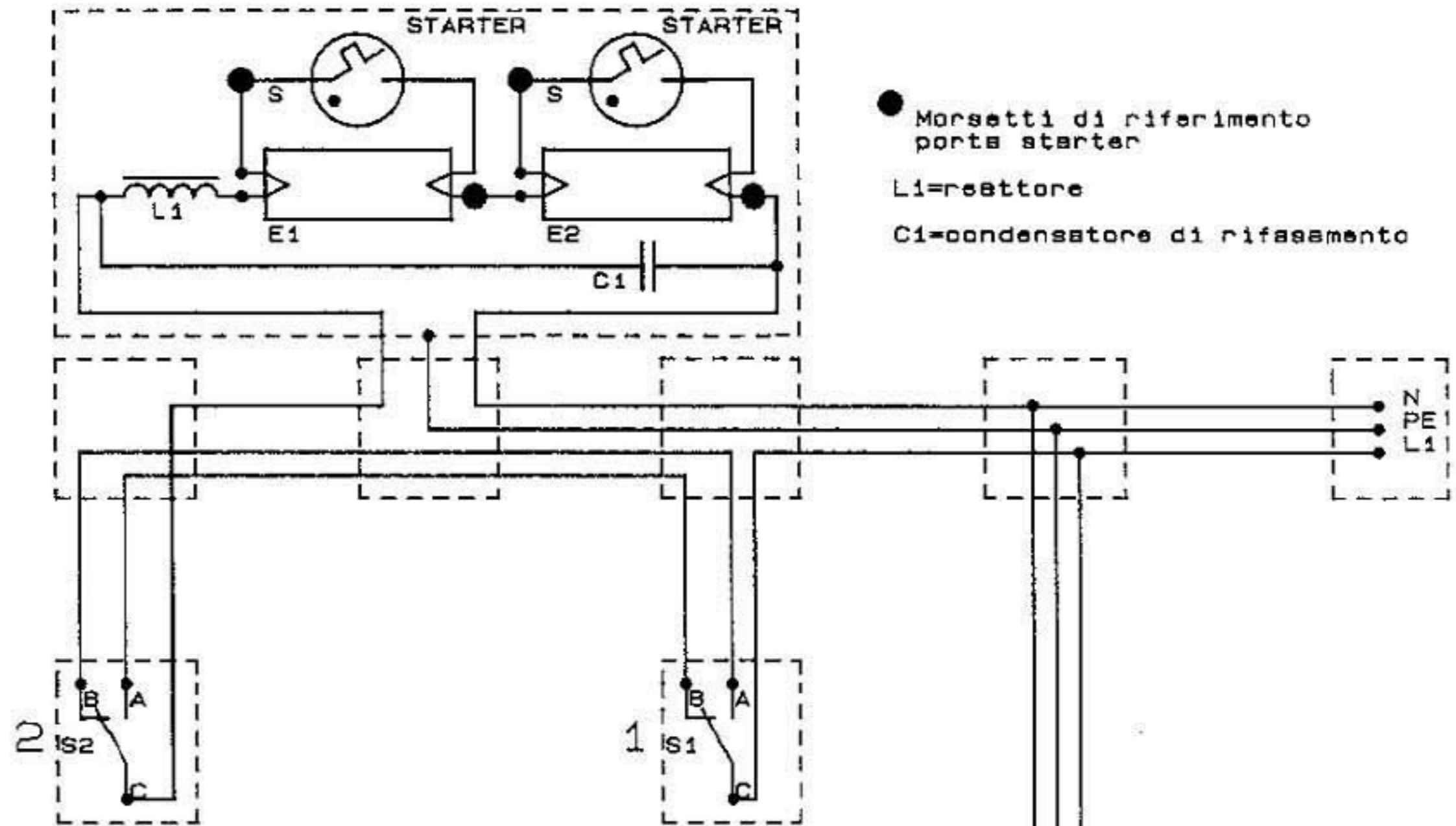


SCHEMA FUNZIONALE



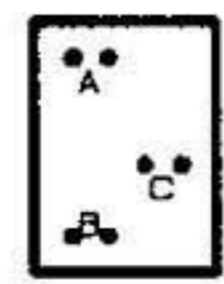
- 1) Resistore 40W
- 2) Lampade fluorescenti da 20W
- 3) Starter 20W

SCHEMA DI MONTAGGIO

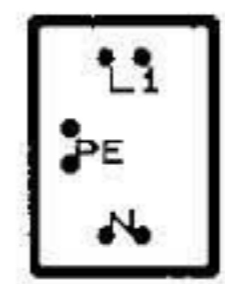


● Morsetti di riferimento porta starter
 L1=reattore
 C1=condensatore di rifasamento

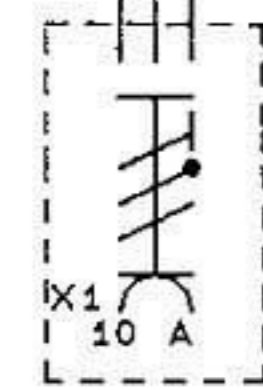
MORSETTI APPARECCHIATURE BTICINO SERIE MAGIC



DEVIATORE



PRESA



Impianto luce comandato da due punti con due lampade fluorescenti in serie a catodo caldo

Size	Document Number	REV
A		
Date:	November 1, 2009	Sheet 1 of 1